

# CellSafe MAX 1A2 UN 8 Gallon Steel Drum



**WARNING:** Prior to use, carefully review all assembly instructions, limitations, and manufacturer guidelines. Failure to follow these instructions may result in serious injury and/or property damage.

**IT IS THE SHIPPERS RESPONSIBILITY** to ensure appropriate regulations governing the transportation of dangerous goods are strictly followed.



ASSEMBLY DETAILS:

## STEEL DRUM: 1A2 OUTER PACKAGING

PRODUCT NO:

**CBDRM008M**

For Groups:

I II III  
X Y Z



**1A2/X96/S/\*\*/USA/M6484**

\*\* Denotes year of manufacture

Up to a Gross  
Package Weight of:

**96 kg**  
211 lbs.

Maximum Permitted  
Weight of Contents:  
(Product & Containers)

**89.3 kg**  
197 lbs.

Pail Dimensions:

**355.6 mm int. dia. x 381 mm h.**  
14" int. dia x 15" h

Outer Box Dimensions:

**454.6 x 454.6 x 450.8 mm**  
17.9" x 17.9" x 17.75"



**NOTES:** SEE Special PACKAGING DETAILS and other information on reverse.



**CellBlockEX is Required** as an insulative cushioning filler of remaining available space.



Our metal drum range is a special 1A2 outer packaging approved under UN Test criteria which allows transport of non-specified inner containers and their contents up to a stated maximum weight.

In metal drum 1A2/X96 the maximum permitted weight of the inner containers and their product contents must not exceed 89.3 kg kilograms, whilst the gross package weight must not exceed 96 kilograms.

Drum 1A2/X96 must be packed and assembled strictly as instructed and is then approved for the transportation of Packing Groups I, II, III, (X, Y, Z) Dangerous Goods.

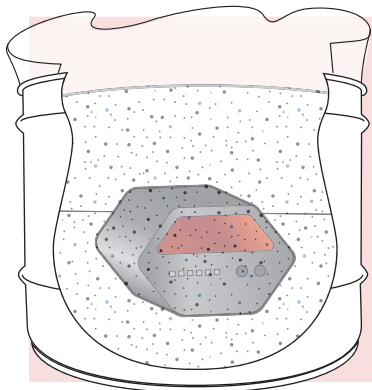
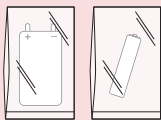
**LITHIUM BATTERIES ONLY TO BE PACKED IN THIS DRUM.**

CBDRM008MINSv1.111124

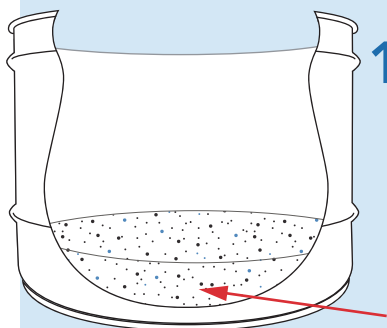
# CellSafe Max 1A2 UN 8 Gallon Steel Drum

PRODUCT NO: CBDRM008M

**NOTE:** It is best-practice to terminal protect batteries for shipping by placing in poly bags. Alternatively, you may tape the ends/terminals.



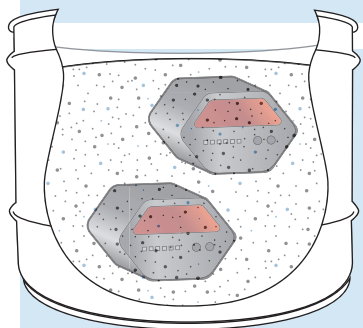
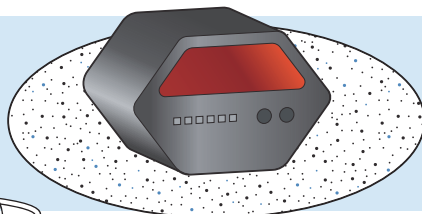
**HINT:** Shipping one battery? Leave the bag of CellBlockEX in the drum. Simply open the bag and work the battery into the CellBlockEX, ensuring that the battery is fully enveloped. Continue with the remaining steps.



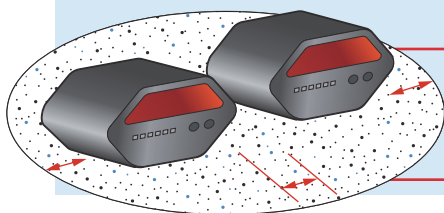
**1** Remove the inner bag of CellBlockEX from the can. Dispense a minimum of 1-2 inches of CellBlockEX into the bottom of the pail as a cushioning base.

2" CELLBLOCKEX LOOSE-FILL

**2** Place batteries or articles in the drum.

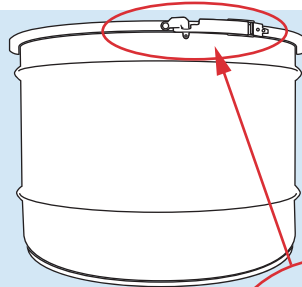
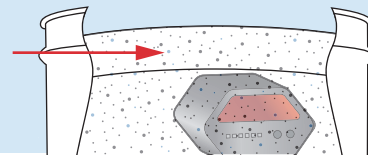


**3** Add CellBlockEX material, completely covering the batteries or articles on all sides. Approximately 2-3" of CellBlockEX should be used for small articles, while 2-4" should be used for larger batteries.



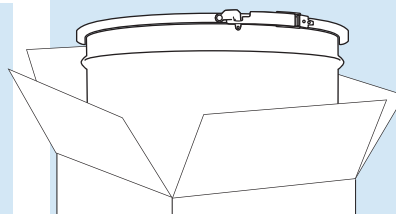
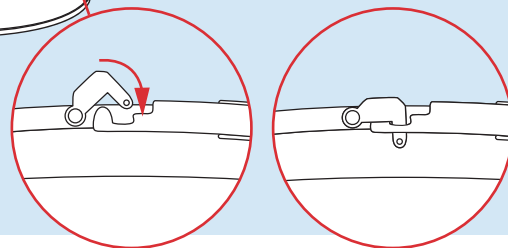
MAINTAIN RECOMMENDED SPACING BETWEEN AND AROUND ARTICLES

**4** Allow approximately 3-4" inches of space at the top of pail. Fill this remaining space with CellBlockEX.



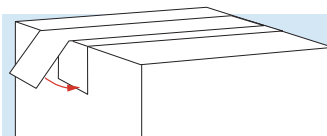
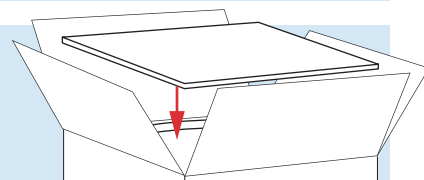
**5** Replace lid; ensure lever latch is pulled tight to lid.

**6** Engage the attached key into channel at top of lever and press down to ensure it locks.



**7** Place the pail in its original shipping box, taking care to remove or cover the previous shipping label(s).

**8** Place heat shield FELT SIDE DOWN over the drum.

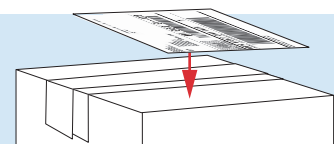


**9** Seal box with ALL provided tape strips.

**10** Apply provided labels to the outer box on the same side.



**11** If a UPS label has been provided, apply to top of box.



**NOTE:** It is the shippers responsibility to ensure appropriate regulations governing the transportation of dangerous goods are strictly followed. **Need help? Contact CellBlock FCS customer service at 1-800-440-4119**