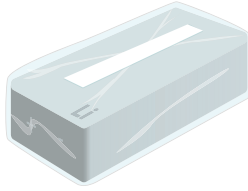


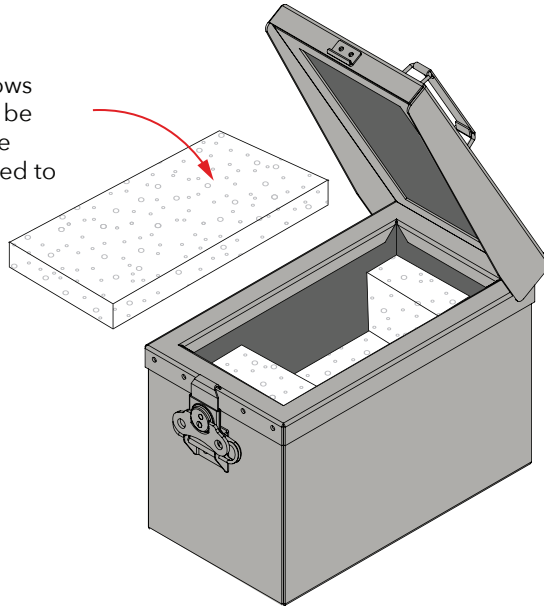
# CellBlock 4B Aluminum Case

## Sized for tool, drone, and other specialty batteries.

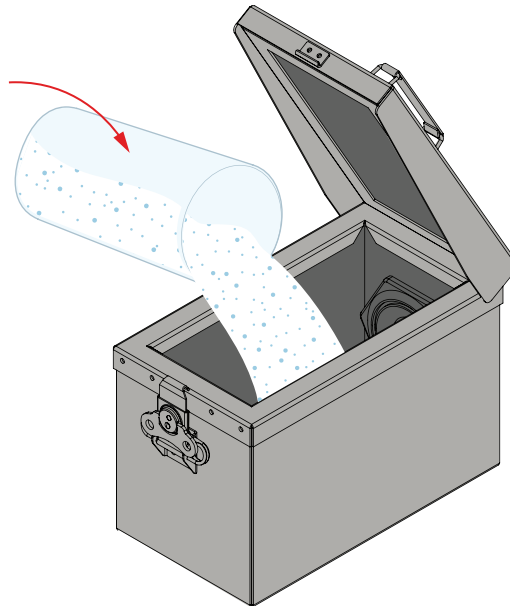
Enclose items in a poly bag or other inner packaging to keep free of loose-fill and protect the terminals.



**PED-Pad** fire suppression pillows and/or FR foam inserts should be used to cushion and secure the battery. They may be customized to your application.



If foam or PED-Pads are not used, an evenly distributed layer of **CellBlockEX** must cover the bottom, top and sides of the packing spaces.



ASSEMBLY DETAILS:

## ALUMINUM CASE: 4B OUTER PACKAGING

PRODUCT NO:

### CBSTC122

For Groups:

I II III  
X Y Z



**4B/X12.4/S/\*\*/  
USA/M6484**

\*\* Denotes month and year of manufacture

Up to a Gross  
Package Weight of:

**12.4 kg**  
27.3 lbs.

Maximum Permitted  
Weight of Contents:

**5.1 kg**  
11.2 lbs.

*(Product, containers & CellBlockEX loose-fill  
and/or FR Foam and/or fire suppression pillows)*

External Dimensions:

**175 x 350 x 246 mm**  
6.9" x 13.8" x 9.7"h

Internal Dimensions:

**132 x 226 x 183 mm**  
5.2" x 8.9" x 7.2"h



**NOTES: SEE Micro Transport  
Cases Instructions** for  
specific recommendations  
and requirements for  
packaging your batteries.

CBSTC122INSv1.053023

# Micro Transport Cases Instructions

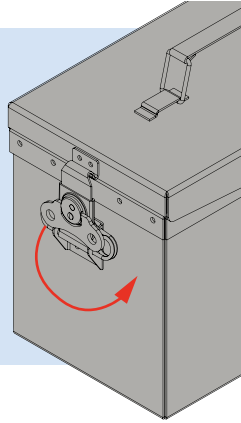
SKUS: CBSTC122, CBSTC018



This battery transportation case is designed to provide protections when shipping a high watt-hour lithium-ion battery. Please follow instructions below and adhere to all shipping regulations.

## 1

Flip up the tab on the front latch and turn counterclockwise to release the lid and open the case.

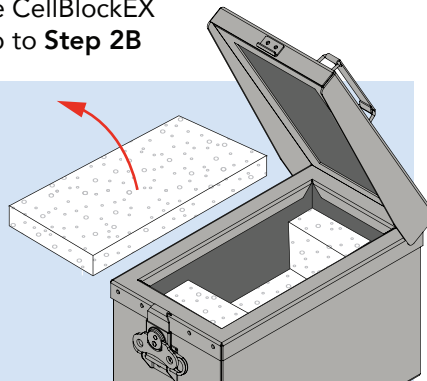


**Instructions for using PED-Pads or FR Foam Inserts.** To use CellBlockEX as the packaging filler, skip to **Step 2B**

*PED-Pads and FR foam inserts are customized to your application.*

## 2A

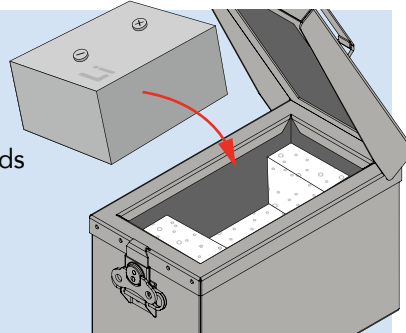
Remove top PED-Pad or FR foam insert.



## 3A

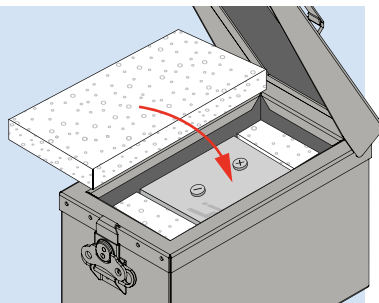
Insert battery between end and/or side PED-Pads or FR foam layers.

Take care not to tear the PED-Pads.



## 4A

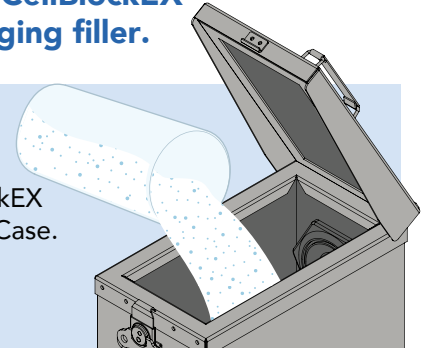
Re-install top PED-Pad or FR foam layer over top of battery.



**Instructions for using CellBlockEX loose-fill as the packaging filler.**

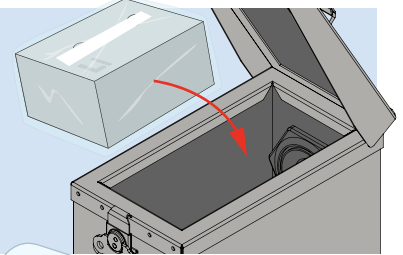
## 2B

Pour a layer of CellBlockEX into the bottom of the Case.



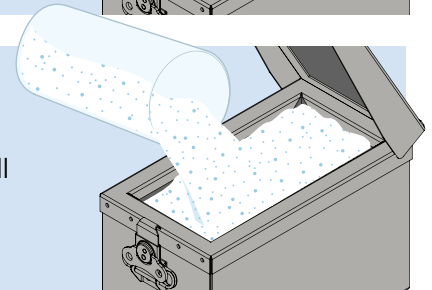
## 3B

Seal battery in a plastic bag. Place in case on top of CellBlockEX base.



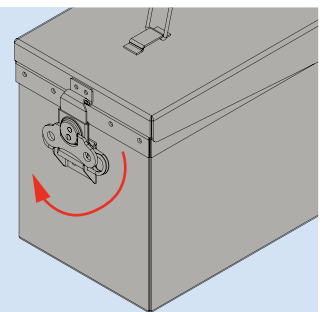
## 4B

Cover battery and fill all negative space with CellBlockEX loose-fill.



## 5

Re-fasten latch by aligning lid latch tab and case hook. Tighten by turning latch clockwise. Fold down to lock in place.



**Attention CellBlock FCS Customers - Notice to Comply:** As the shipper of record you must fully comply with all appropriate agency regulations and labeling. **IMPORTANT:** Please check with your carrier prior to shipment since some carriers require prior registration before accepting damaged, defective, or recalled batteries.

CBSTC122IN5v1.053023